



series 8000  
For every taste, climate and budget.

The Wayne-Dalton Series 8000 gives you more choices. From entry level designs to high-efficiency insulated models and windload-rated doors for coastal regions. You won't find a broader range of choices than the Series 8000.

**On the cover**  
The 7' high Model 8100 single-wide Colonial doors are accented by Cathedral I windows. The doors are shown in Taupe.

Choose for style.  
Choose for performance.

series 8000

The TorqueMaster® Plus counterbalance system seals springs safely inside a steel tube to prevent accidental release of tension that could cause injury.



NOW IMPROVED

Tamper-resistant safety bottom brackets help avoid possible injury by preventing inadvertent loosening when the counterbalance cables are still under tension.



For a true custom door look, add decorative hardware straps and handles to your Series 8000 door. In six designs including black hammered-look steel shown here.



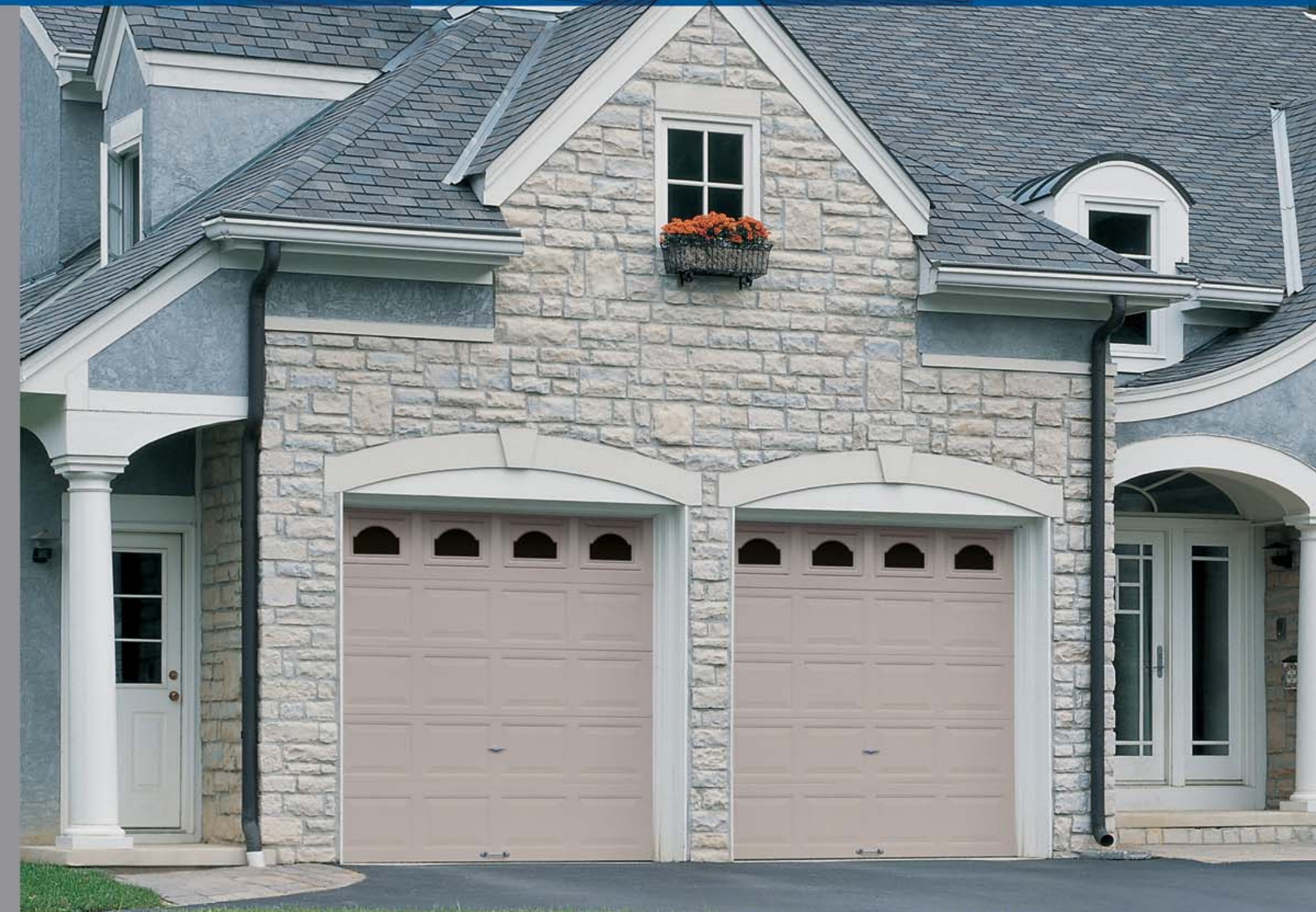
Models 8300, 8100 and 8000 are available with structural reinforcements for use in coastal regions. They meet windload requirements of the International Building Code, Florida Building Code and Texas Dept. of Insurance.



Visit Wayne-Dalton's online Door Selection Center to compare and choose the door, windows and color that's perfect for your home. Go to [www.wayne-dalton.com](http://www.wayne-dalton.com).



NOW IMPROVED



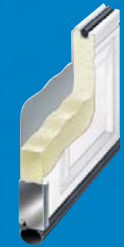
[www.wayne-dalton.com](http://www.wayne-dalton.com)

©2007 Wayne-Dalton Corp. • One Door Drive • Mt. Hope, Ohio 44660  
Item 330448 04/07

**Wayne  
Dalton**  
GARAGE DOORS & OPENERS

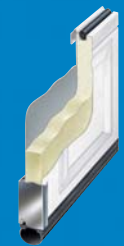
# What do you want in your new door?

Series 8000 garage doors give you all the choices. There's a perfect solution for any style, taste, climate and budget. Start here...



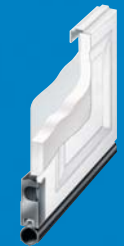
## model 8500

- + R-15 polyurethane foamed in for added strength
- + 27-gauge steel
- + 2" thick, premium grade door
- + Optional Windload-rated reinforcements available
- + Lifetime Limited Warranty
- + Finished panel interior



## model 8300

- + R-11 polyurethane foamed in for added strength
- + 27-gauge steel
- + Optional windload-rated reinforcements available
- + Lifetime Limited Warranty
- + Finished panel interior



## model 8200

- + R-6.8 polyurethane foamed in for added strength
- + 25-gauge steel
- + 10-year Warranty
- + Finished panel interior
- + Box style struts to provide greater strength



## model 8100

- + R-5 polystyrene foam insulating insert
- + 25-gauge steel
- + Optional windload-rated reinforcements available
- + 10-year Warranty
- + TorqueMaster™ safety-sealed springs
- + Finished panel interior
- + Box style struts to provide greater strength



## model 8000

- + Optional windload-rated reinforcements available
- + 25-gauge steel
- + 10-year Warranty
- + TorqueMaster™ safety-sealed springs
- + Box style struts to provide greater strength



CHOOSE YOUR

CHOOSE YOUR

CHOOSE YOUR

## STYLE COLOR WINDOWS

Start by selecting the door style you like with the right combination of insulation and features. Then pick one of our factory-finish colors. Finally, select the window style that will complement your home's architecture.

### PANEL STYLES



Ranch\*

Available for model 8000, 8100, 8300 only.  
\*Models 8000 and 8100 are not available in all areas. Check with your Wayne-Dalton dealer for details.



Colonial

Available for all models.



Contemporary

Available for model 8300 and 8500 only.

### more color choices.

Choose one of our factory-finishes that never needs painting. Or, use a good quality exterior latex paint that matches your home's trim exactly.

### COLORS



White



Almond



Taupe



Brown

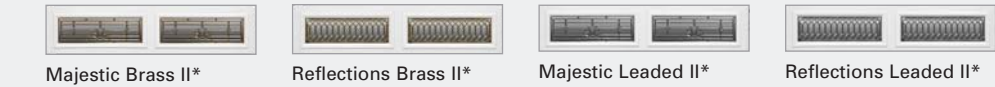
White is available for all models. Almond is not available for model 8300 Contemporary. Taupe is not available for model 8000 Ranch, 8100 Ranch, or 8300 Contemporary. Brown is not available for model 8000 Ranch, or 8100 Ranch.

### windows make your door part of the architecture.

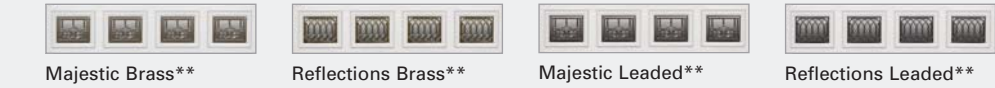
Select from two window series to complement your home's design. With so many choices, it's easy to create a seamless style for your home.

### DÉCOR™ WINDOWS

#### RANCH PANEL WINDOW OPTIONS



#### COLONIAL & CONTEMPORARY PANEL WINDOW OPTIONS



\*Available for model 8300. \*\*Available for models 8300 and 8500.

### STYLELINE™ WINDOWS

#### RANCH PANEL WINDOW OPTIONS



#### COLONIAL & CONTEMPORARY PANEL WINDOW OPTIONS



Window options are not interchangeable between panel options.



**Right**  
The Model 8300 door is shown in a 3-car double-plus-single configuration that blends beautifully with this Normandy style home. The 7' high Colonial style doors in Taupe are enhanced by optional clear windows and lift handles.